

New Species of *Acmaeodera* from California (Coleoptera: Buprestidae)

By JOSEF N. KNULL, Department of Zoology and Entomology,
The Ohio State University, Columbus, Ohio

Acmaeodera fattigi n. sp.

♀. Rather robust, elongate, cuneate at apex; ground color shining black; each elytron with yellow spots as follows: one in middle at base, two back of base, two at middle, two back of middle and one near apex, an elongate red spot at apex, elytra and sides of pronotum clothed with appressed plumose white scales; head and rest of pronotum densely clothed with white pubescence; ventral surface densely clothed with appressed plumose scales.

Head convex, covered with large shallow punctures; antennae serrate from fifth segment.

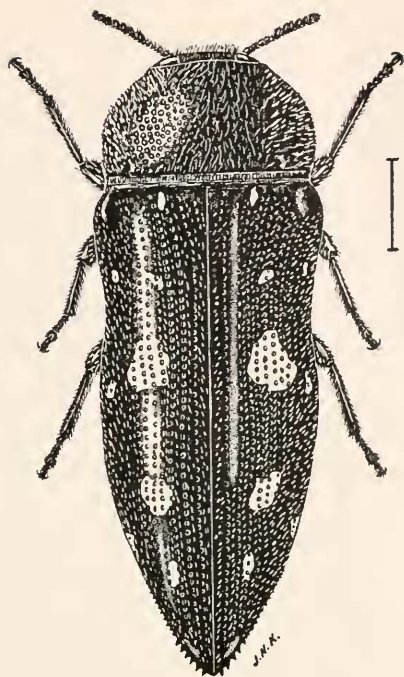
Pronotum convex, much wider than long, widest in middle, wider at base than apex; sides broadly rounded, constricted at base and apex; disk with slight median depression at base and one each side; surface densely coarsely punctate, punctures larger and closer on sides, base transversely corrugated.

Elytra at base as wide as base of pronotum; sides expanded back of base, then constricted and again expanded at middle, converging to rounded coarsely serrate apices; disk convex, umbone prominent; surface with closely placed large punctures forming striae, interspaces finely punctate, outer interspaces near apex serrulate.

Anterior margin of prosterum with wide emarginate truncation, margin not reaching lateral prolonged front angles. Abdomen beneath densely, finely punctate, punctures concealed by vestiture; last visible segment not modified.

Length 7.1 mm.; width 2.5 mm.

Holotype ♀ collected at Jacumba, San Diego Co., CALIFORNIA, July 6, 1952. Two *paratypes* collected at Mountain Springs, same county, June 28 and July 6, 1952. All specimens collected by D. J. and J. N. Knull and in collection of author.



Acmaeodera fattigi n. sp. (Line equals 1 mm.)

This species should stand next to *A. mimicata* Knull (1938) from which it can be separated by the cuneate elytral apices, yellow mark at base of each elytron and elongate red mark at apex.

The prosternal margin is similar to that of *A. pinalorum* Knull (1950); however the long pubescence on elytra will separate *A. pinalorum* from *fattigi*.

I take pleasure in naming this species for P. W. Fattig, who has added much to our knowledge of Georgia insects.

REFERENCES

- KNULL, J. N. 1930. A new species of *Acmaeodera* and one new subspecies (Coleoptera, Buprestidae). *Ent. News* 41: 15-16.
———. 1938. New southwestern Buprestidae and Cerambycidae. *Ann. Ent. Soc. Amer.* 31: 135-143.